

# Post-Cardiac Arrest Syndrome Management

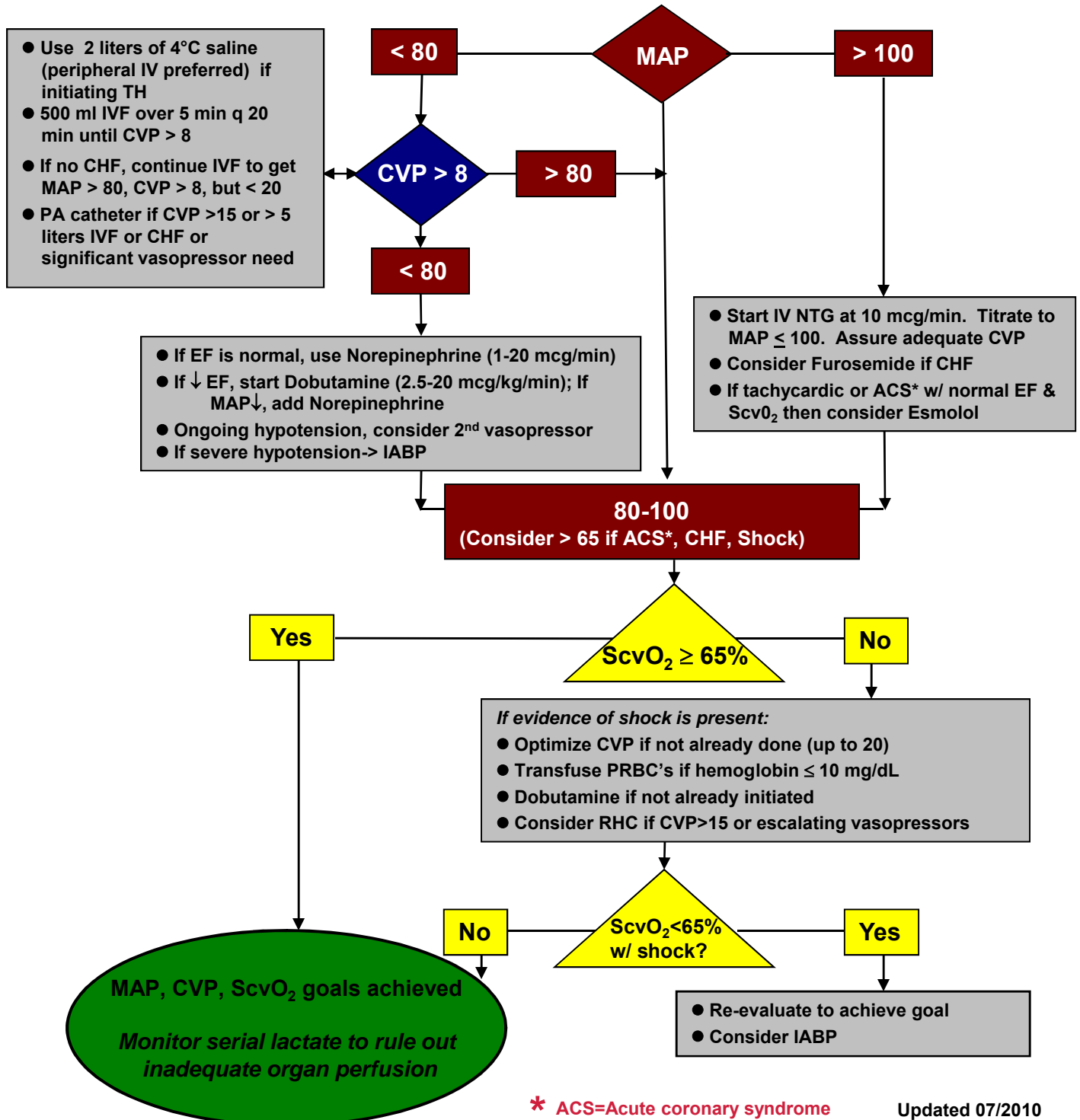
## Who needs this?

Resuscitated patients with:

- GCS Motor score < 6
- No other reason for coma
- Not DNR B/C or DNI status

## Getting Started:

- Stat ECG, echocardiogram, & cardiology consult (Please see TH protocol for instructions regarding Stat ECG, Echo & Cards consult)
- Stat head CT if deemed medically necessary
- Initiate therapeutic hypothermia (TH) & place radial or femoral a-line
- Insert PreSep® CVC in subclavian or internal jugular vein
- Notify Super SAR for ICU bed and EEG fellow for EEG
- If pregnant, consult Ob/Gyn





**For Questions or Concerns, call 267-253-9035 or 302-588-7083**

### Equipment Checklist

1. Arterial line kits (both radial and femoral)
2. Presep central venous catheter & Vigileo monitor
3. Two one liter bags of 4°C 0.9% saline (stored in ED and ICU refrigerators)
4. Gaymar III 7900 external cooling device with 1 torso and 2 thigh pads
5. Temperature probe foley catheter or esophageal temp probe (1/8 inch to 1/4 inch adapter needed for Gaymar device)
6. Neuromuscular blockade monitoring equipment (not required for ED)
  - a. Peripheral nerve stimulator
  - b. BIS monitor and sensor
7. Rapid access to warmed IV fluid

Celsius	Fahrenheit
38.0	100.4
37.5	99.5
37.0	98.6
36.5	97.7
36.0	96.8
35.5	95.9
35.0	95.0
34.5	94.1
34.0	93.2
33.5	92.3
33.0	91.4
32.5	90.5
32.0	89.6
31.5	88.7
31.0	87.8
30.5	86.9
30.0	86.0

Updated: 07/2010